

DELTA-PRISMA 4WD

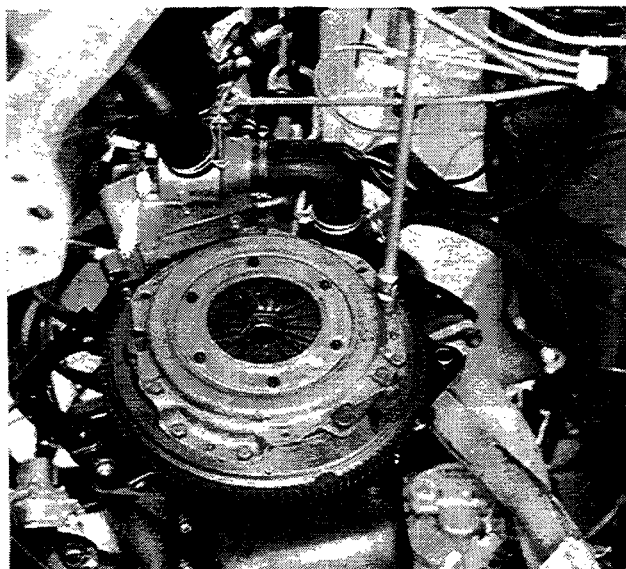
Clutch



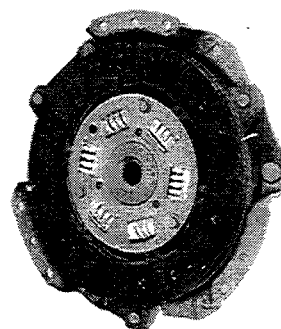
Service
Manual

NOTE *When removing the clutch it is necessary to remove the gearbox-differential unit.
See section 21-27 for details.*

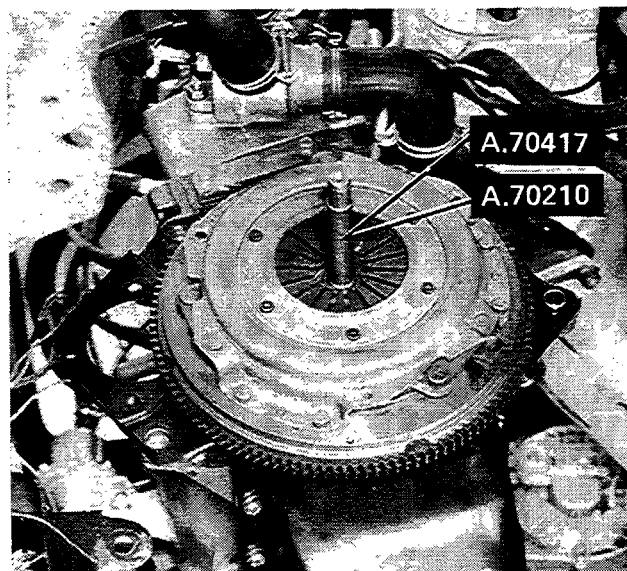
When the gearbox-differential unit has been removed, proceed as follows:



Removing clutch assembly

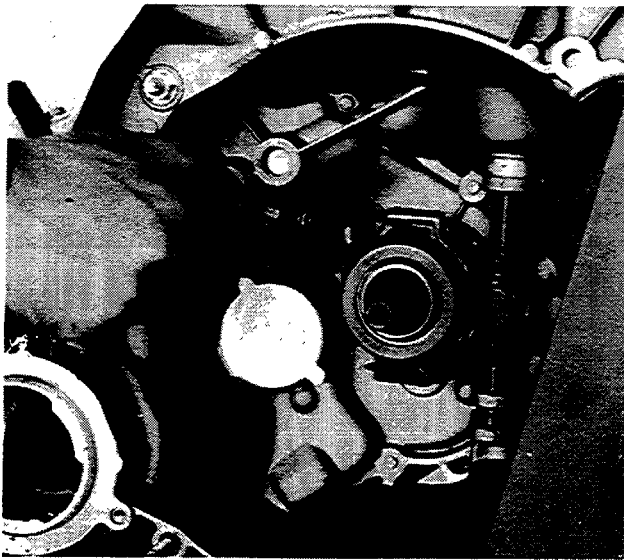


Clutch assembly



Alignment of driven plate when refitting clutch using centering pin A.70417 (1300) or A.70210 (1500 and 1600)

18.

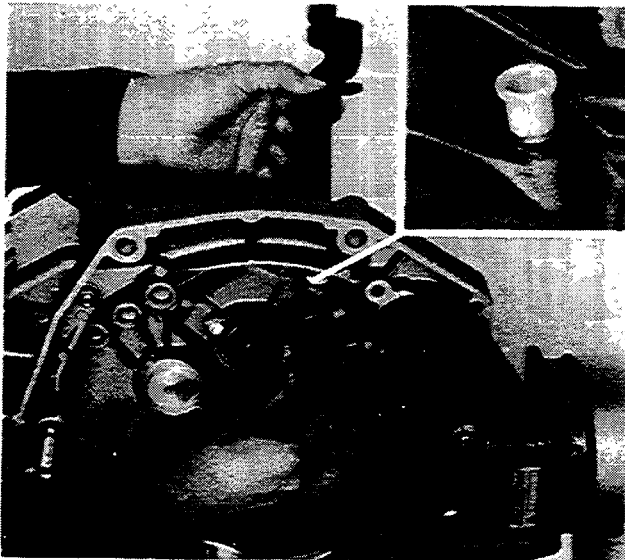


THRUST BEARING



Removing-refitting

There should be no jerkiness or noise when rotating or the bearing should be replaced.

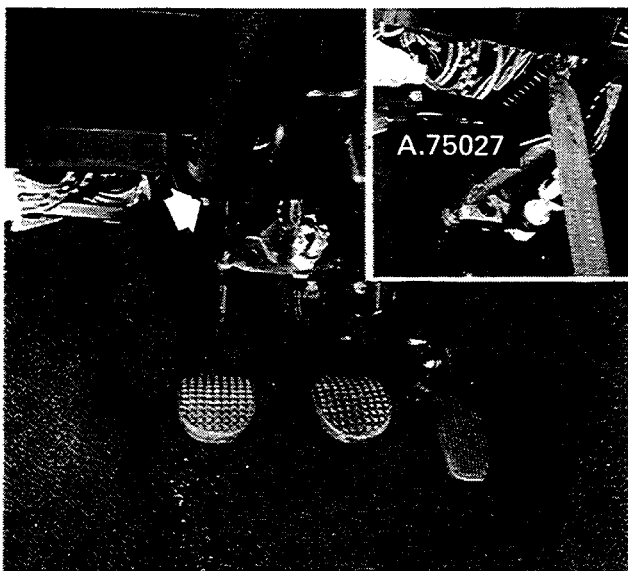


THRUST FORK



Removing-refitting thrust fork and relative control shaft

The bush must be replaced whenever the fork control shaft shows excessive play.



CLUTCH PEDAL



Removing-refitting clutch pedal using tool A.75027

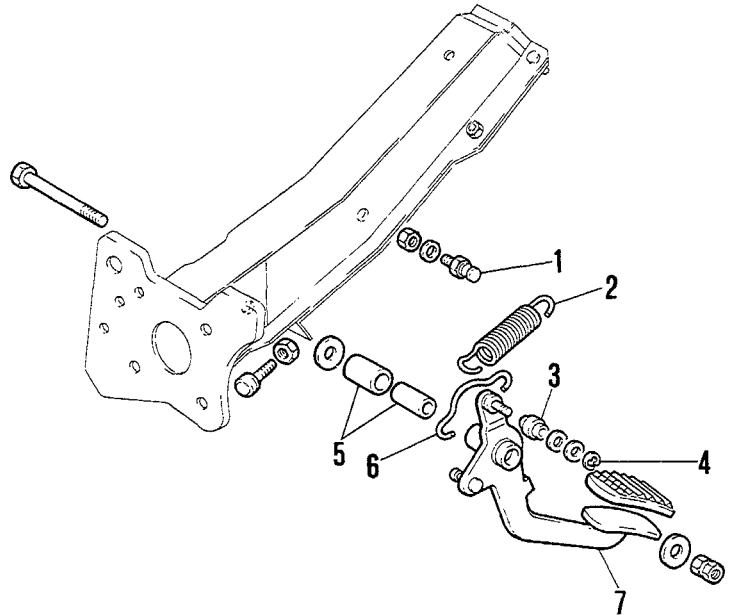
NOTE *The remove the clutch pedal, press where shown by the arrow after having first disconnected the clutch cable.*



Grease the parts concerned before fitting.

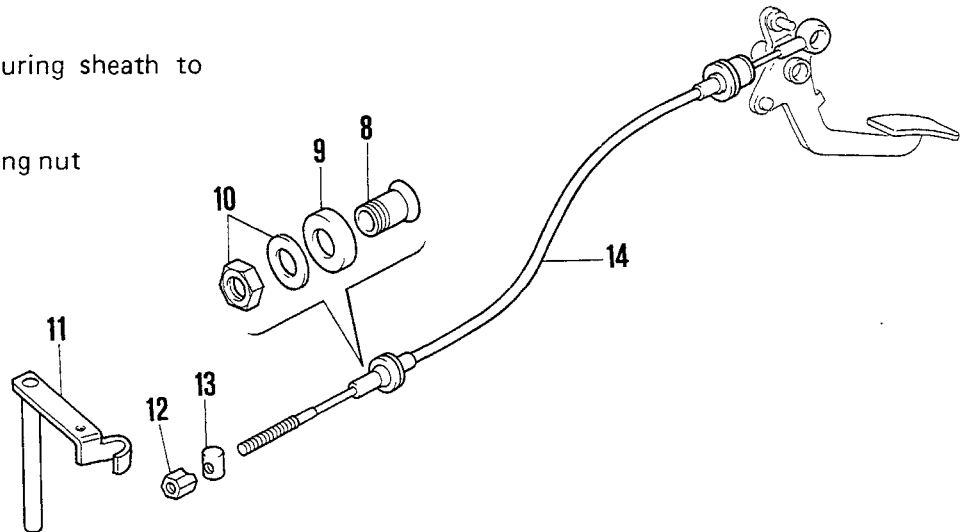
Clutch pedal components

1. Spring retainer
2. Clutch spring
3. Bush for end of flexible cable- 4. Clip for end of cable
- 5. Bushes for pedal
- 6. Spring tie
- 7. Clutch pedal



Complete flexible cable components

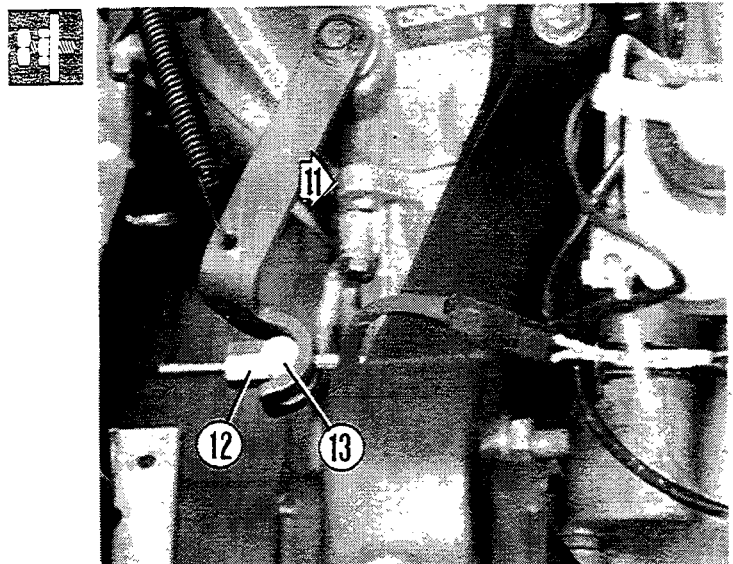
8. Sheath sleeve
9. Rubber spacer
10. Nut and washer for securing sheath to gearbox casing
11. Clutch operating lever
12. Clutch pedal travel adjusting nut
13. Pawl
14. Sheathed flexible cable



Adjusting clutch pedal travel

Pull lever (11) in the direction of the arrow until nut (12) comes out of its pawl (13); screw or unscrew nut (12) depending on whether the free travel of the pedal is less than or greater than about 15mm.

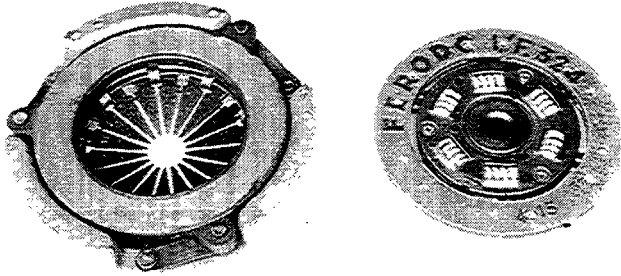
Release lever (11) making sure that nut (12) engages in pawl (13).



18.

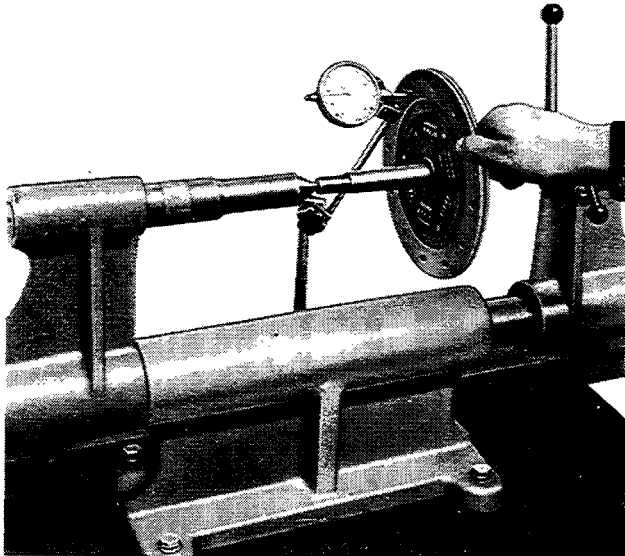


DRIVEN PLATE – PRESSURE PLATE



Checking

NOTE *If there is excessive wear on the driven plate linings, either replace the linings or the entire driven plate. If there is wear, overheating or deep grooves on the pressure plate, replace the assembly.*



Driven plate alignment check

The run out on the plate must not be more than 0.25mm.

- A.70210 Guide pin for centering clutch plate (1500 and 1600)
- A.70417 Guide pin for centering clutch plate (1300)
- A.75027 Tool for removing-refitting clutch pedal spring